

Smart Bicycle lights with Controller



Item NO: BL002/BL004/BL006

Product size:

BL002 box size :17.6*12*8.2cm GW:575.3g

Carton size:51*37.5*27.5cm

Qty/carton:24pcs/carton

Gw/Nw:14.5KG/13.5kg

BL004 box size:19.6*16.5*8.2cm GW:871g

Carton Size: 40*35*34.5cm

Qty/carton:16pcs/carton

Gw/Nw:14.55kg/13.5kg

BL006 box size:19.6*16.5*8.2cm GW:1034g

Carton size:40*35*34.5cm

Qty/carton:16pcs/carton

Gw/Nw:17.65kg/16.5kg

Model Number: BL002/BL004/BL006

Patent No:2023307286071

Material:ABS plastic

Function: Front light, Rear light, Brake Light, Turning Light, Hazard light,warning safe light.

Models: 6 light Models, White Shinning light, White steady light,red light, red shining light,

Key features: Easy Install and Easy operate, Each lights with left/right choose, 6 models change, each light can be any place, One key make all lights shining in the mean time.

Working Hours:

10-11 hours for red shining lights

8-9 hours for white shining lights

6-7 hours for red steady light

4-5 hours for white shining light

Battery Capacity: 1200mah for light, 600mah for control

Waterproof:IP5 for Certification, With inner pcba nano-coating. Can put into water over 30mins.

Magnet: Strong magnet for installation,easy to take out

Combo :

BL002: 1 Control 2 lights

BL004: 1 Control with 4 lights

BL006: 1 Control with 6 lights

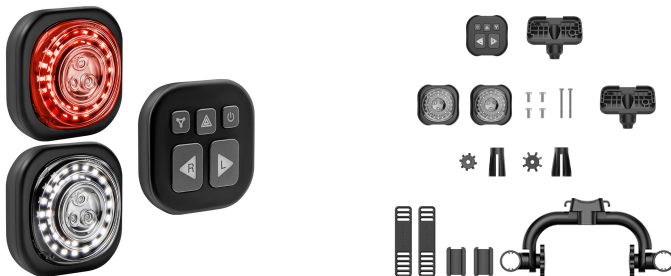
Video

<https://youtu.be/hl571lrG4uc>



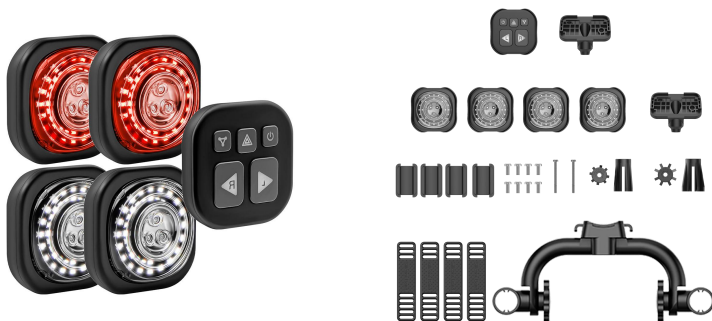
Product Package list

1. BL002



Product list: Controller*1, bicycle lights*2, magnetic light base*3, silicone band*3, silicone pad*3, mounting bracket*2, tail bracket *1, expander (14-19mm)*2, Expander (19-24mm)*2, short screws*4, long screw *2, screwdriver*1, data cable*1 manual *1

2. BL004



Product list: Controller*1, bicycle lights*4, magnetic light base*5, silicone band*5, silicone pad*5, mounting bracket*2, tail bracket *1, expander (14-19mm)*2, Expander (19-24mm)*2, short screws*4, long screw *2, screwdriver*1, data cable*1 manual *1

3. BL006



Product list: Controller*1, bicycle lights*6, magnetic light base*7, silicone band*7, silicone pad*7, mounting bracket*2, tail bracket *1, expander (14-19mm)*2, Expander (19-24mm)*2, short screws*4, long screw *2, screwdriver*1, data cable*1 manual *1

Installation Video

https://www.youtube.com/watch?v=SfF_TycdjsA



Product advantage

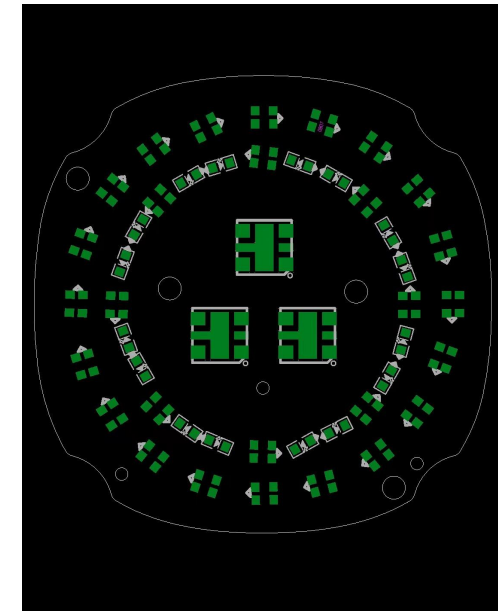
- Unique appearance design



Each lights with beautiful appearance design and waterproof IP5.



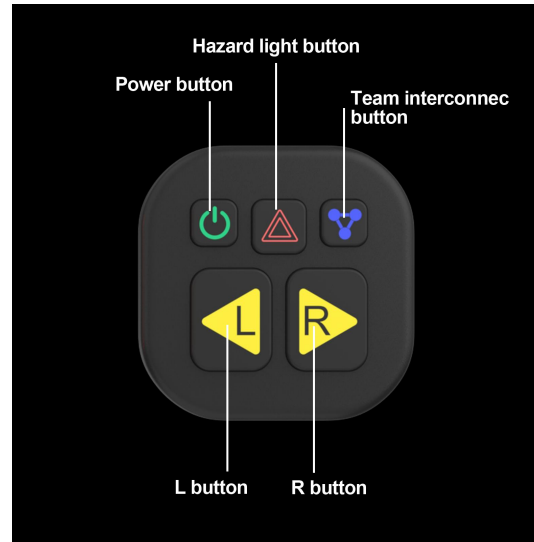
Each lights with power on/off botton, And left/right side choose, Modes changes with 6 modes.



Each lights with 28 small leds bulbs and 3 bigger led lights.

Product Advantage

- Bluetooth remote control connect



With Bluetooth remote controller , it is more safe and convenient when you riding the bicycle.

Product Advantage

Multi-fuction Light- 3 in 1 Light Color



Each bike light can change to red, white, and yellow. Use as front, rear, turn signal, width light, brake & emergency light, daytime running light; With a good lighting system, rider can clearly convey their intentions to others, enhance communication between road user, let rider ride confidently in various occasions, enjoy the fun of riding.

Make riding safer, more comfortable, especially in heavy city traffic or at night.

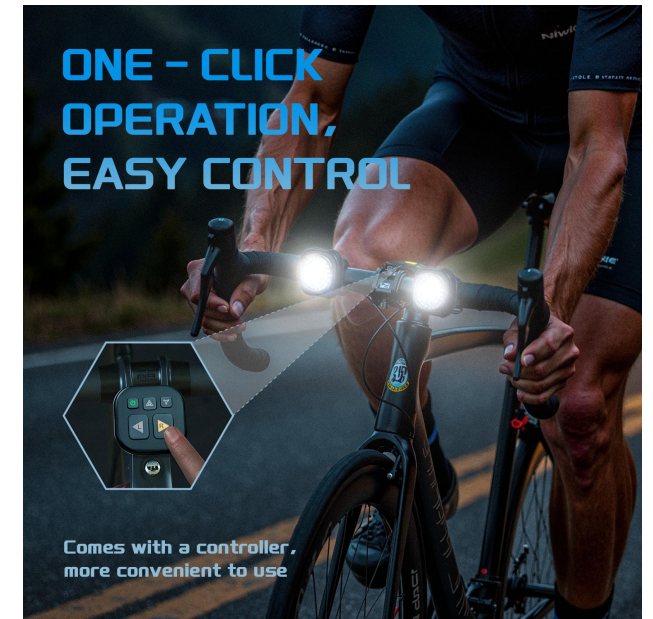
Product Advantage



Multifunction
Integrated with turn signal lights, headlight, taillight, brake light and safety warning light.

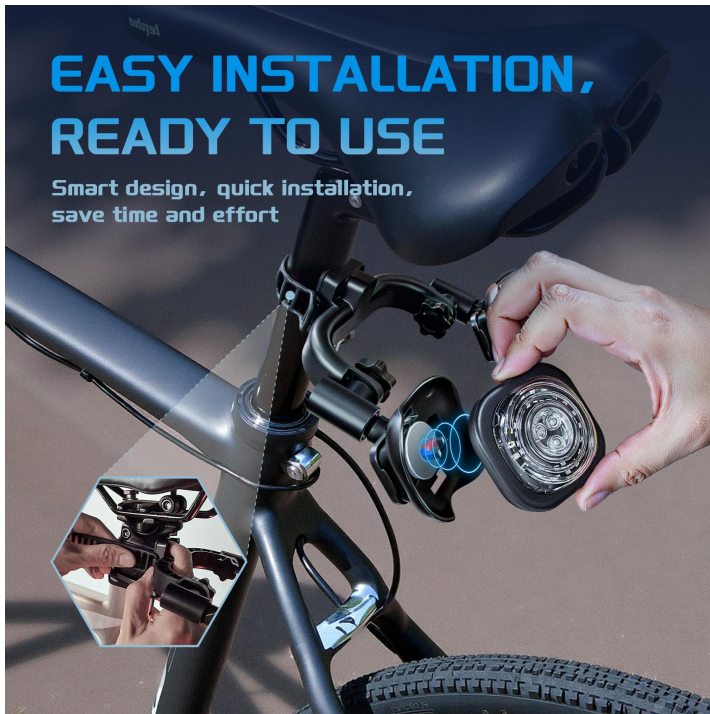


6 Models lights
6 modes lights change with white lights ,red lights.



Easy Operate
With remote controller in front, You can safely operate it when you driving.

Product Unique Advantage



Magnetic suction structure
strong magnetic design, one - click
retrieval, convenient and easy.

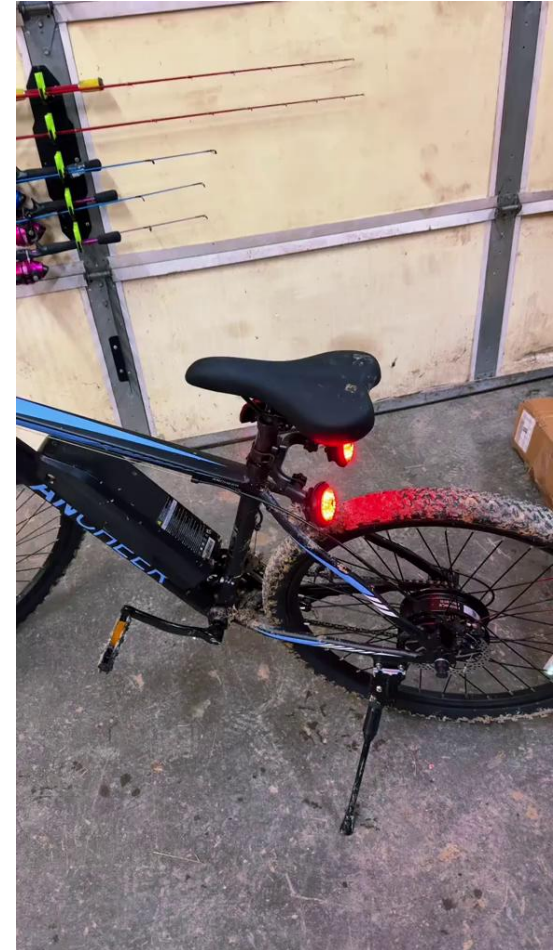


Ipx5 Waterproof certification
Acutually, inner pcba all made with
nano-coating, You can put it into
water over 30mins .It is also safe.



Multi-scenario application
safeguarding safety, warning of
danger.

User feedback video



Product Parameters



PRODUCT NAME: Controller

Controller buttons: 1. Power button: 2. Hazard light button: 3. Team interconnect button: 4. L.R button

Hazard light button (single click): When pressed, the red icon on the button flashes, and simultaneously, the paired vehicle lights flash yellow. Press again to cancel.

Team interconnect button (single click): indicates team connection status, After powering on, the blue icon on the button flashes. Once paired with other bicycles in the team, it becomes steady blue, If the connection is lost due to distance, it starts flashing blue, Upon reconnection, it turns steady blue again, Pressing the button again initiates active disconnection, and the light goes off.

L.R button (single click): Controls the turn signals. Pressing it activates yellow flashing, press again to cancel.

Battery type: Polymer lithium battery; Battery model: 603035 (referring to the battery size); Battery capacity: 550mAh; Voltage: 3.7V; Battery weight: 11.6g.

Questions of the Controller

1. The Function of **Team interconnect button**

* Links all lights to flash in perfect sync with one-touch setup.

2. Why We can not use one key to open all the lights?

* **For one key open all the lights, all lights must stay in low-power standby to receive signals. However, this leads to reduce battery life and compromise portability**

3. The kit lights(2/4/6 in 1) have been compared in the factory, Customer can directly use it.

4. If lights are broken down, customer can get extra light supplying, it has comparing method in the manual.

5. Why is there a Circle imprint on the shell bottom?

In order to increase the magnetic attraction of the product, the back shell is made thin than other position, so the circular imprint will be stand out.

5 Star Reviews



Chuck

★★★★★ **Great lights to buy**

Reviewed in the United States on March 30, 2025

Color: 4pcs+Remote Controller

Best lights in bought so far turning signal works, enough battery to last 3 days to and from work which is about an hour drive. A bit of an issue with the rear light mount but nothing a little zip ties won't fix other than that great product.



Anthony D

★★★★★ **Excellent Safety Lights for Motorcycle (one time use) & eBike (forever more)**

Avis laissé aux États-Unis le 14 février 2025

Commentaire client Vine (Club des Testeurs) sur un produit gratuit (Qu'est-ce que c'est ?)

I was a little hesitant about using these on my motorcycle due to the indicator lights being broken, but I got them for a one time use to the shop - they will work perfectly! While not specifically designed for motorcycles, after the trip I will put them on my my eBike. The turn signals, brake lights, and multiple modes are fantastic features. I'm so glad I found this product—it could very well be a lifesaver on the road!



Signaler

Helpful

Report



Rick B.

★★★★★ **AWESOME LIGHTS**

Reviewed in the United States on February 13, 2025

Color: 2pcs+Remote Controller | **Verified Purchase**

LOVE EM'

THE MAGNETIC ATTACHMENT IS AWESOME

THE LIGHTS WILL MAKE AN AWESOME ADDITION TO MY NEW MOLO SCOOTER'

Helpful

Report



Francisco

★★★★★ **Signal lights**

Reviewed in the United States on January 26, 2025

Color: 4pcs+Remote Controller | **Verified Purchase**

Excellent!! 1 of the best purchase's I have made from Amazon.

Helpful

Report

Patent

Utility Model Patent Certificate

Design Patent Certificate

US patent no. is waiting for certification



Certification

US FCC

TCB

GRANT OF EQUIPMENT
AUTHORIZATION
Certification
Issued Under the Authority of the
Federal Communications Commission
By:

LGAI Technological Center S.A. (APPLUS)
Ronda de la Font del Carme, s/n
P.O.
Box 08193,
Barcelona,
Spain
Date of Grant: 08/27/2024
Application Dated: 08/27/2024

SYNCLINKING INC
3700 TENNYSON ST,
DENVER, CO, 80212, US
DENVER, CO 80212

Attention: MIN LI, Manager

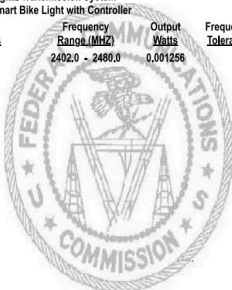
NOT TRANSFERABLE

EQUIPMENT AUTHORIZATION is hereby issued to the named GRANTEE, and is
VALID ONLY for the equipment identified hereon for use under the Commission's
Rules and Regulations listed below.

FCC IDENTIFIER: 2BKHT-BL002-1
Name of Grantee: SYNCLINKING INC
Equipment Class: Digital Transmission System
Notes: Smart Bike Light with Controller

Grant Notes	FCC Rule Parts	Frequency Range (MHz)	Output Watts	Frequency Tolerance	Emission Designator
	15C	2402.0 - 2480.0	0.001256		

Output power listed is conducted.



TCB

TCB

GRANT OF EQUIPMENT
AUTHORIZATION
Certification
Issued Under the Authority of the
Federal Communications Commission
By:

LGAI Technological Center S.A. (APPLUS)
Ronda de la Font del Carme, s/n
P.O.
Box 08193,
Barcelona,
Spain
Date of Grant: 08/28/2024
Application Dated: 08/28/2024

SYNCLINKING INC
3700 TENNYSON ST,
DENVER, CO, 80212, US
DENVER, CO 80212

Attention: MIN LI, Manager

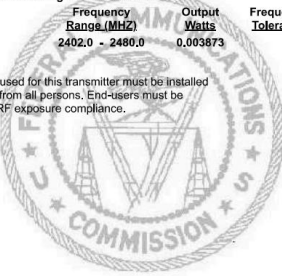
NOT TRANSFERABLE

EQUIPMENT AUTHORIZATION is hereby issued to the named GRANTEE, and is
VALID ONLY for the equipment identified hereon for use under the Commission's
Rules and Regulations listed below.

FCC IDENTIFIER: 2BKHT-BL002
Name of Grantee: SYNCLINKING INC
Equipment Class: Digital Transmission System
Notes: Smart Bike Light with Controller

Grant Notes	FCC Rule Parts	Frequency Range (MHz)	Output Watts	Frequency Tolerance	Emission Designator
	15C	2402.0 - 2480.0	0.003873		

Output power listed is conducted. The antenna(s) used for this transmitter must be installed
to provide a separation distance of at least 20 cm from all persons. End-users must be
provided with operating procedures for satisfying RF exposure compliance.



TCB

Europe CE

Certificate No. FCS202408212CA01

Product Smart Bike Light with Controller

Brand Name N/A

Model(s) No. BL002

Series Model BL004.BL006

Holder Shenzhen Xin Changtu Technology CO.,Ltd

Address 201, Tianyuan Long Shopping Mall, No.44, Hongxiang Industrial Road, New II
Community, Xinqiao Street, Baoan District, Shenzhen City

Manufacturer Shenzhen Xin Changtu Technology CO.,Ltd

Address 201, Tianyuan Long Shopping Mall, No.44, Hongxiang Industrial Road, New II
Community, Xinqiao Street, Baoan District, Shenzhen City

Report No. FCS202408212A02 FCS202408212E02
FCS202408212H01 FCS202408212W02 FCS202408212W03

TEST STANDARDS:

EN IEC 55015:2019+A11:2020

EN IEC 61547-2023

ETSI EN 301 489-1 V2.2.3 (2019-11)

ETSI EN 301 489-17 V3.2.4 (2020-09)

ETSI EN 300 328 V2.2.2 (2019-07)

ETSI EN 300 440 V2.2.1 (2018-07)

EN IEC 60598-2-1:2021 used in conjunction with

EN IEC 60598-1:2021 + AMD11:2022

EN 62479: 2010

The applicant of the certificate is authorized to use this certificate in connection with EC
declaration of conformity to the Directive. The certificate is only applicable to the equipments
described above.
The submitted sample of the above equipment has been tested and found to comply with the
following European Directive:

CE_RED Directive - 2014/53/EU

CE

Approved by: Jack Wang
September 2, 2024
Jack Wang/Managerial



Dongguan Funas Testing Technology Co., Ltd.

Tel: 0769-27280901 <http://www.fcs-lab.com>

CERTIFICATE OF CONFORMITY

Oem Services

- Logo print
- Package design
- Project Oem